

MUDITA

Designed by
Faruk Malhan & Koray Malhan



VALUE PROPOSAL



Mudita is an innovative divider panel system meticulously crafted to provide a perfect balance of style and functionality. Tailored to meet your unique needs, this lightweight and versatile design offers four customizable heights and a variety of panel attachments.

MUDITA

Designed by **Faruk Malhan & Koray Malhan**

PRODUCTION TIME



6-8 weeks + Shipping

ASSEMBLY NOTES



The product is delivered disassembled.

WARRANTY



The warranty period shall be two years as of the date of delivery of the product.

Any malfunction that arises out of such use of the product that is in breach of the requirements and specifications set forth within the relevant user's manual shall be excluded from the warranty scope.

Warranty does not include customer's own fabric, leather, or other materials.

CLEANING & MAINTENANCE



Clean with a damp cloth with no chemical agents.

The maintenance and cleaning instructions for fabric, wood, marble, glass, metal and plastic used in our products are available in the cleaning and maintenance manual.

* Please scan the QR code to see the cleaning and maintenance manual.



COLORS & MATERIALS



Panels: Particleboard upholstered in foam and selected fabrics

Frame: Powder coated aluminum

Tabletop: 25 mm MDF with selected laminates

Glides: Black plastic

The modules and the components inside are fastened together with metal ganging brackets.

Mudita series supports following upholsteries of the Koleksiyon colours and materials catalogue.
Please scan the QR code to see the fabric information.



Fabrics

C Jet
Torino

*Quilted back panels can be upholstered with the following fabric options:

-Torino 9501, Torino 9801, Torino 9111, Torino 9611

Laminate



3101
WHITE



3153
LIGHT GREY



3241
GREY



4598
REAL OAK



4599
DARK OAK

Metal Finish



RAL7021
ANTHRACITE

TYPOLOGY



MUDITA S0 CC1_H140 / CC1_H140_D



Overall Width: 2454 mm / 96.6"
Overall Depth: 1854 mm / 73"
Overall Height: 1400 mm / 55.1"
Table Height: 742 mm / 29.2"
Table Length: 1500 mm / 59"
Seat Height: 450 mm / 17.7"
Seat Depth: 550 mm / 21.7"

8 pcs
0.871 m³
30.76 cbft³

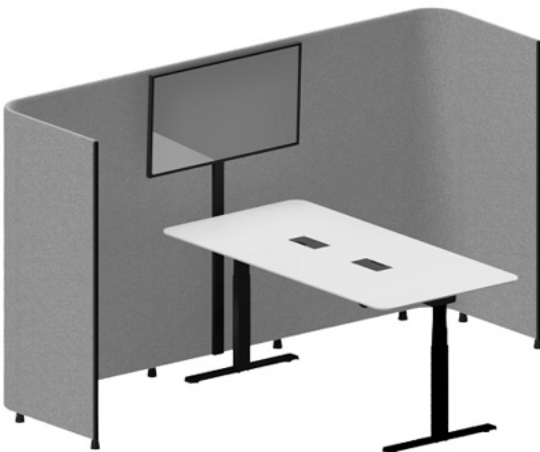
Product Description:

This Mudita unit features two seating units on each side of a fixed height table. The table features powder coated aluminum legs, a cable grommet, and a cable management box under the laminated MDF tabletop.

The MDF-core panels are upholstered in selected fabrics. The outer surface of the back panel can be ordered quilted or seamless.

This product accommodates a flat screen TV up to 42".

MUDITA S0 DM1_H169 / DM1_H169_D



MUDITA S0 DM1_H169 / DM1_H169_D Overall

Width: 2854 mm / 112.3"
Overall Depth: 1917 mm / 75.4"
Overall Height: 1690 mm / 66.5"
Table Height:
Table Length: 1800 mm / 70.9"
Table Depth: 900 mm / 35.4"

12 pcs
1.307 m³
46.16 cbft³

Product Description:

This Mudita unit features a height adjustable table with black powder coated aluminum legs. The table features two cable grommets, and a cable management box under the laminated MDF tabletop.

The MDF-core panels are upholstered in selected fabrics. The outer surface of the back panel can be ordered quilted or seamless.

This product accommodates a flat screen TV up to 42".

MUDITA S0 KTC_CRM / KTC_CRM_D



18 pcs
3.87 m³
136.66 cbft³

MUDITA S0 KTC_CRM / KTC_CRM_D

Overall Width: 2736 mm / 86.9"
Overall Depth: 2209 mm / 31.5"
Overall Height: 2100 mm / 66.5"

Product Description:

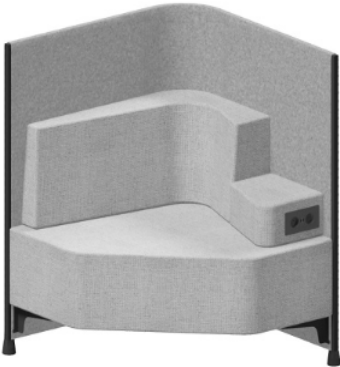
This Mudita unit's curtained section. Inside of the unit has three shelves and storage cabinets on either side. The shelves feature waxed chamfer edges.

The MDF-core panels are upholstered in selected fabrics. The outer surface of the back panel can be ordered quilted or seamless.

TPOLOGY



MUDITA S0 WL1_H11 / WL1_H110_D



0.484m³
17.09 cbft³

Overall Width: 843 mm / 33.1"
Overall Depth: 843 mm / 33.1"
Overall Height: 1100 mm / 43.3"
Seat Height: 450 mm / 17.7"
Seat Depth: 592 mm / 23.3"

Product Description:

These Mudita seating units feature 90 degree corners which enable them to be arranged in different shapes. The seats and panels are upholstered in selected fabrics, and the armrests feature a power unit with two electrical outlets and two USB outlets.

The MDF-core panels are upholstered in selected fabrics. The upholstery on the panel can be ordered quilted or seamless.

MUDITA S0 WL2_H110 / WL2_H110_D



0.562 m³
19.85 cbft³

Overall Width: 1655 mm / 65.2"
Overall Depth: 1054 mm / 41.5"
Overall Height: 1100 mm / 43.3"
Seat Height: 450 mm / 17.7"
Seat Depth: 592 mm / 23.3"

Product Description:

These Mudita seating units feature 90 degree corners which enable them to be arranged in different shapes. The seats and panels are upholstered in selected fabrics, and the armrests feature a power unit with two electrical outlets and two USB outlets.

The MDF-core panels are upholstered in selected fabrics. The upholstery on the panel can be ordered quilted or seamless.

MUDITA S0 WL3L_H110 / WL3L_H110_D



1.00 m³
35.31 cbft³

Overall Width: 3459 mm / 136.2"
Overall Depth: 1473 mm / 58"
Overall Height: 1100 mm / 43.3"

Product Description:

This Mudita seating unit also functions as a space divider. The seats, panels, and back cushions are upholstered in selected fabrics.

The MDF-core panels are upholstered in selected fabrics. The upholstery on the panel can be ordered quilted or seamless.

TYPOLOGY



MUDITA S0 WSD2_ WSD2_H140_D

11 pcs

1.438 m³
19.25 cbft³



Overall Width: 3281 mm / 129.2"
Overall Depth: 1245 mm / 49"
Overall Height: 1400 mm / 55.1"

Product Description:

These Mudita units function both as a space divider and a working station. The MDF-core panels are upholstered in selected fabrics, and the desks come in selected laminates with powder coated sheet metal cable grommets. The shelves featured in select models are laminated MDF and feature waxed chamfer edges. The upholstery on the panel can be ordered quilted or seamless.

MUDITA S0 WSH2_H140 / WSH2_H140_D

8 pcs

0.618 m³
21.82 cbft³



Overall Width: 2881 mm / 113.4"
Overall Depth: 677 mm / 113.4"
Overall Height: 1400 mm / 55.1"

Product Description:

These Mudita units function both as a space divider and a working station. The MDF-core panels are upholstered in selected fabrics, and the desks come in selected laminates with powder coated sheet metal cable grommets. The shelves featured in select models are laminated MDF and feature waxed chamfer edges. The upholstery on the panel can be ordered quilted or seamless.

MUDITA S0 RS1_H140 / RS1_H140_D

11 pcs

1.898 m³
67.03 cbft³



Overall Width: 5287 mm / 208.2"
Overall Depth: 1663 mm / 65.5"
Overall Height: 1400 mm / 55.1"

Product Description:

This Mudita shelving unit functions both as a space divider and a storage solution. The MDF-core panels are upholstered in selected fabrics. The shelves come in selected laminates, and feature waxed chamfer edges.

The MDF-core panels are upholstered in selected fabrics. The back panel upholstery can be ordered quilted or seamless.

TPOLOGY



MUDITA S0 WSC1_H110 / WSC1_H110_D



8 pcs
0.223 m³
7.87 cbft³

Overall Width: 1665 mm / 65.6"
Overall Depth: 627 mm / 24.7"
Overall Height: 1100 mm / 43.3"

Product Description:

This Mudita shelving unit functions both as a space divider and a working station. The MDF-core panels are upholstered in selected fabrics, and the desks come in selected laminates with powder coated sheet metal cable grommet. The shelves featured in select models are laminated MDF. The desks and shelves feature waxed chamfer edges.

The upholstery on the panel can be ordered quilted or seamless.

MUDITA S0 WSB2_H110 / WSB2_H110_D



8 pcs
0.545 m³
19.25 cbft³

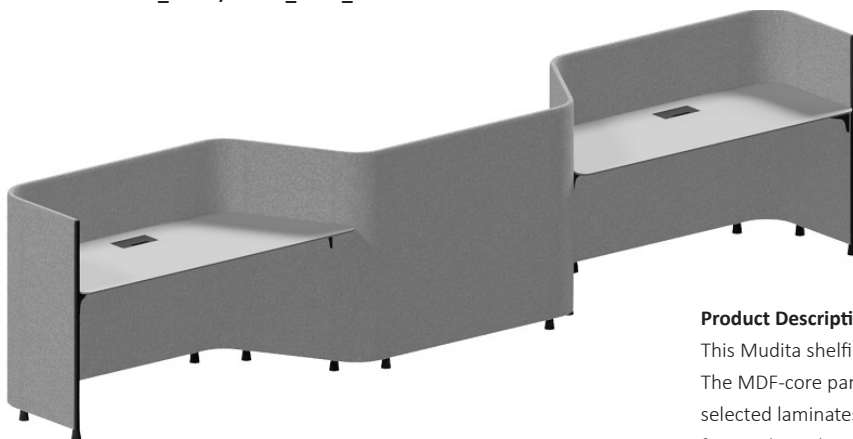
Overall Width: 3112 mm / 122.5"
Overall Depth: 687 mm / 27"
Overall Height: 1100 mm / 43.3"

Product Description:

This Mudita shelving unit functions both as a space divider and a working station. The MDF-core panels are upholstered in selected fabrics, and the desks come in selected laminates with powder coated sheet metal cable grommets. The shelves featured in select models are laminated MDF. The desks and shelves feature waxed chamfer edges.

The upholstery on the panel can be ordered quilted or seamless.

MUDITA S0 WSB3_H110 / WSB3_H110_D



10 pcs
0.837 m³
29.56 cbft³

Overall Width: 4766 mm / 187.6"
Overall Depth: 695 mm / 27.4"
Overall Height: 1100 mm / 43.3"

Product Description:

This Mudita shelving unit functions both as a space divider and a working station. The MDF-core panels are upholstered in selected fabrics, and the desks come in selected laminates with powder coated sheet metal cable grommets. The shelves featured in select models are laminated MDF. The desks and shelves feature waxed chamfer edges.

The upholstery on the panel can be ordered quilted or seamless.

TYPOLOGY



MUDITA S0 SW1_H140 / SW1_H140_D



0.546 m³
19.29 cbft³



Overall Width: 2554 mm / 100.6"
Overall Depth: 3225 mm / 127"
Overall Height: 1400 mm / 55.1"

Product Description:

This Mudita unit functions both as a space divider and a working station. The MDF-core panels are upholstered in selected fabrics, and the desks come in selected laminates with powder coated sheet metal cable grommet. The shelves featured in are laminated MDF. The desks and shelves feature waxed chamfer edges.

The upholstery on the panel can be ordered quilted or seamless. The seating section features a steel frame interior structure sofa and cushions upholstered in selected fabrics.

MUDITA S0 WSA2_H140 / MUDITA S0 WSA2_H140_D



2.588 m³
91.40 cbft³



Overall Width: 4145 mm / 163.2"
Overall Depth: 2055 mm / 80.9"
Overall Height: 1400 mm / 55.1"

Product Description:

This Mudita unit functions both as a space divider and a working station. The MDF-core panels are upholstered in selected fabrics, and the desks come in selected laminates with cable grommets. The shelves featured in are laminated MDF. The desks and shelves feature waxed chamfer edges.

The upholstery on the panel can be ordered quilted or seamless.

MUDITA S0 WSA2_H140 / WSA2_H140_D



2.588 m³
136.66 cbft³



Overall Width: 4745 mm / 186.81"
Overall Depth: 2055 mm / 80.9"
Overall Height: 1400 mm / 55.1"

Product Description:

This Mudita unit functions both as a space divider and a working station. The MDF-core panels are upholstered in selected fabrics, and the desks come in selected laminates with cable grommets. The shelves featured in are laminated MDF. The desks and shelves feature waxed chamfer edges.

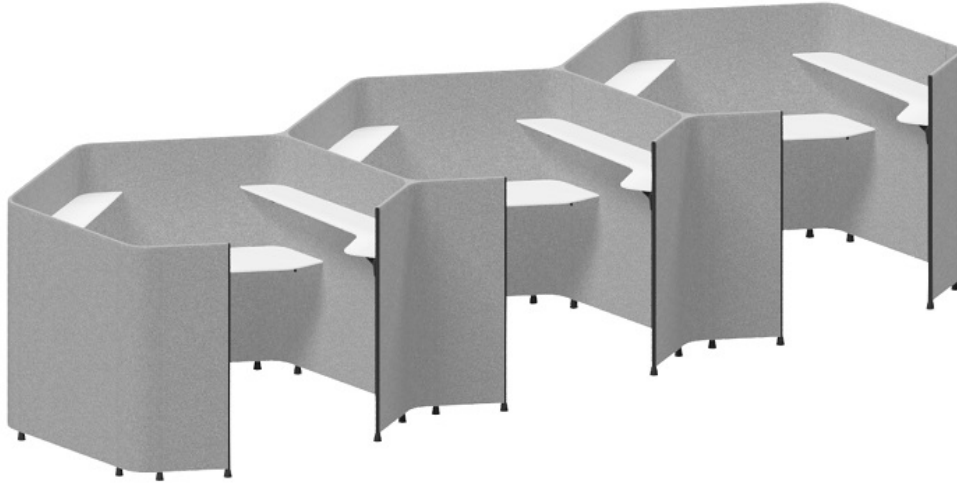
The upholstery on the panel can be ordered quilted or seamless.

The seating section features a steel frame interior structure sofa upholstered in selected fabrics. The armrest features two electrical units and two USB ports.

TYPOLOGY



MUDITA S0 WSA3_H140 MUDITA / S0 WSA3_H140_D



2.478 m³
87.51 cbft³

Overall Width: 6204 mm / 244.3"

Overall Depth: 2055 mm / 80.9"

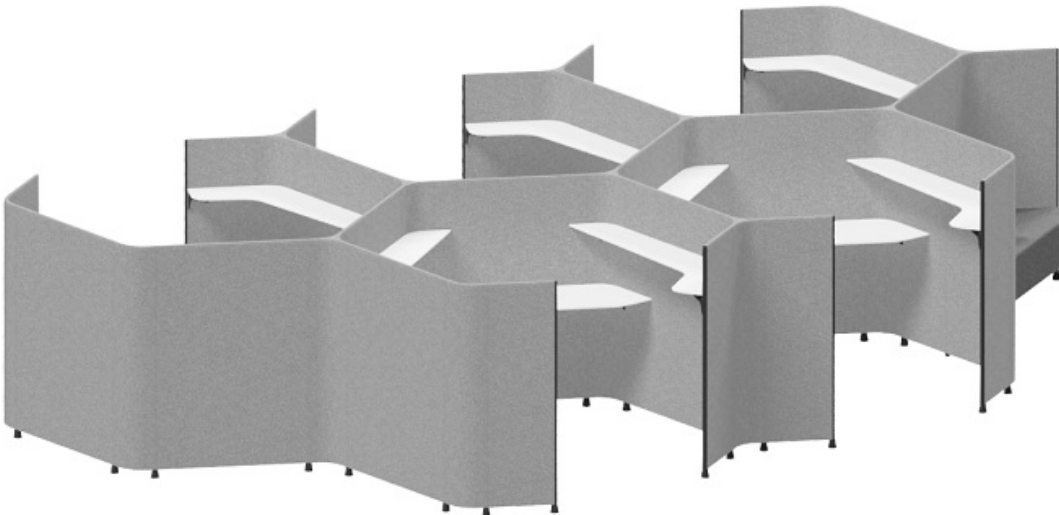
Overall Height: 1400 mm / 55.1"

Product Description:

This Mudita unit functions both as a space divider and a working station. The MDF-core panels are upholstered in selected fabrics, and the desks come in selected laminates with cable grommets. The shelves featured in are laminated MDF. The desks and shelves feature waxed chamfer edges.

The upholstery on the panel can be ordered quilted or seamless.

MUDITA S0 WSA5_H140 / WSA5_H140_D



4.838 m³
170.85 cbft³

Overall Width: 6680 mm / 263"

Overall Depth: 3539 mm / 139.3"

Overall Depth: 1400 mm / 55.1"

Product Description:

This Mudita unit functions both as a space divider and a working station. The MDF-core panels are upholstered in selected fabrics, and the desks come in selected laminates with cable grommets. The shelves featured in are laminated MDF. The desks and shelves feature waxed chamfer edges.

The upholstery on the panel can be ordered quilted or seamless. The seating section features a steel frame interior structure sofa upholstered in selected fabrics. The armrest features two electrical units and two USB ports.

TPOLOGY



MUDITA S0 WSA6_H140 / WSA6_H140_D



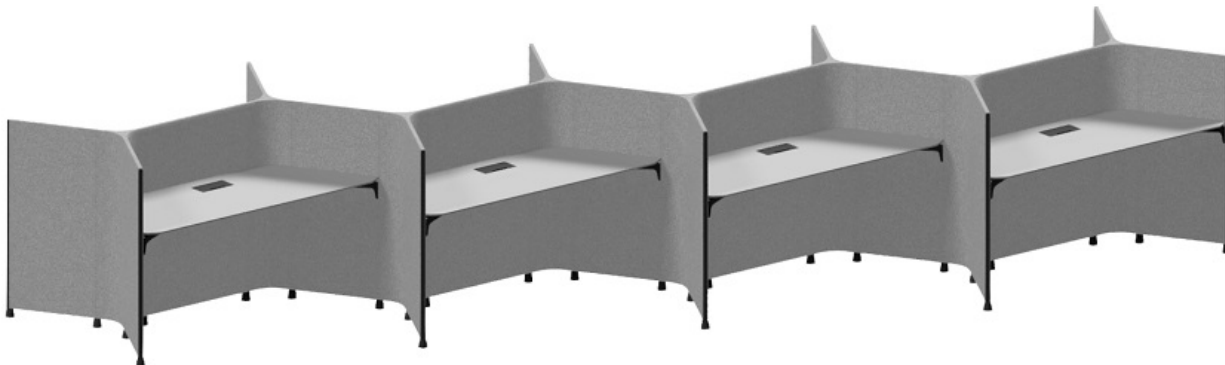
60 pcs
5.06 m³
178.69 cbft³

Overall Width: 7226 mm / 284.5"
Overall Depth: 3539 mm / 139.3"
Overall Depth: 1400 mm / 55.1"

Product Description:

This Mudita unit functions both as a space divider and a working station. The MDF-core panels are upholstered in selected fabrics, and the desks come in selected laminates with cable grommets. The shelves featured in are laminated MDF. The desks and shelves feature waxed chamfer edges. The upholstery on the panel can be ordered quilted or seamless.

MUDITA S0 WSC8_H110 / WSC8_H110_D



25 pcs
1.677 m³
58.57 cbft³

Overall Width: 5814 mm / 228.9"
Overall Depth: 3276 mm / 128.9"
Overall Depth: 1100 mm / 43.3"

Product Description:

This Mudita unit functions both as a space divider and a working station. The MDF-core panels are upholstered in selected fabrics, and the desks come in selected laminates with powder coated sheet metal cable grommets. The desks feature waxed chamfer edges. The upholstery on the panel can be ordered quilted or seamless.

☺ koleksiyon