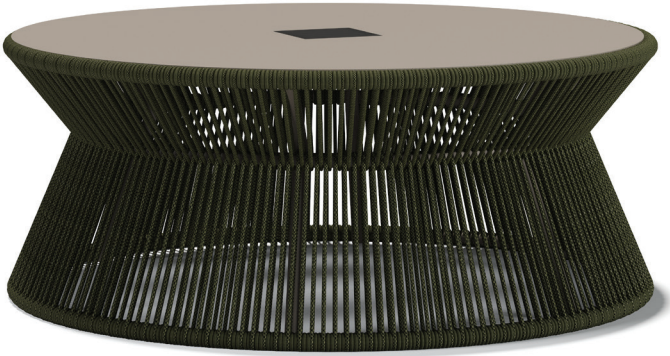


# CASTILLO

Designed by  
**ATELIER XTERIER**



---

## VALUE PROPOSAL



Castillo Table, designed with inspiration from castle silhouettes, can maintain its elegance for many years in all weather conditions with its robust aluminum structure, outdoor-friendly woven rope, and aluminum tabletop. Thanks to the LED lighting powered by solar panels added to Castillo's tabletop, it is also suitable for nighttime use. The special woven rope unaffected by UV rays and the electrostatically painted stainless aluminum material provide comfort for year-round use.

# CASTILLO

Designed by  
**ATELIER XTERIER**

---

## PRODUCTION TIME



6-8 weeks + Shipping

---

## ASSEMBLY NOTES



The product is delivered assembled.

---

## AREA OF USE



Suitable for both Indoor and Outdoor use.

---

## WARRANTY



The warranty period shall be two years as of the date of delivery of the product.

Any malfunction that arises out of such use of the product that is in breach of the requirements and specifications set forth within the relevant user's manual shall be excluded from the warranty scope.

Warranty does not apply to customer's own fabric, leather, or other materials.

---

## CLEANING & MAINTENANCE



Clean with a damp cloth with no chemical agents.

The maintenance and cleaning instructions for fabric, wood, marble, glass, metal and plastic used in our products are available in the cleaning and maintenance manual.

\*Please scan the QR code to see the cleaning and maintenance manual.



## COLOURS & MATERIALS

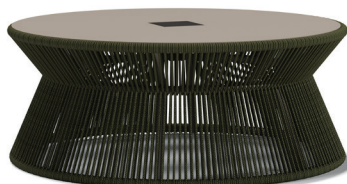
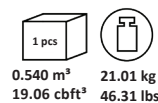


**Table Top:** Powder coated aluminum

**Base:** Woven rope over powder coated aluminum structure

This coffee table features a solar-powered integrated LED lighting unit.

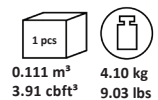
\*Color and material preference cannot be made other than product images.



MK / R48



IE ANTIQ. PALM  
SANDY  
NC72075



MK / R48



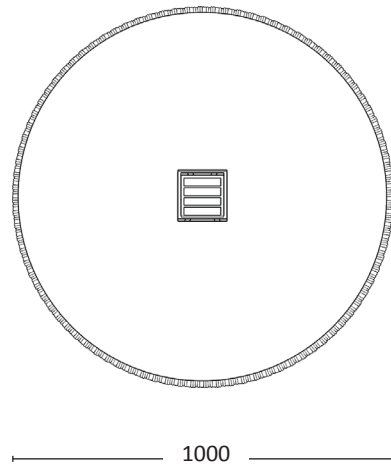
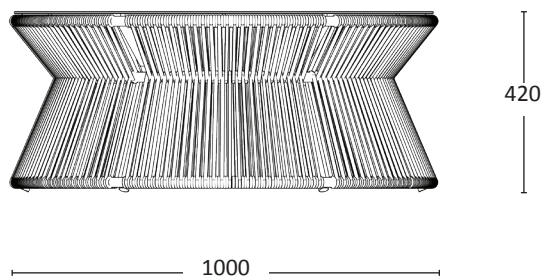
IE ANTIQ. PALM  
SANDY  
NC72075

## TPOLOGY



---

### CASTILLO SERIES



#### Dimensions:

**Width:** 1000 mm / 39.4"

**Depth:** 1000 mm / 39.4"

**Height:** 420 mm / 16.1"

#### Product Description:

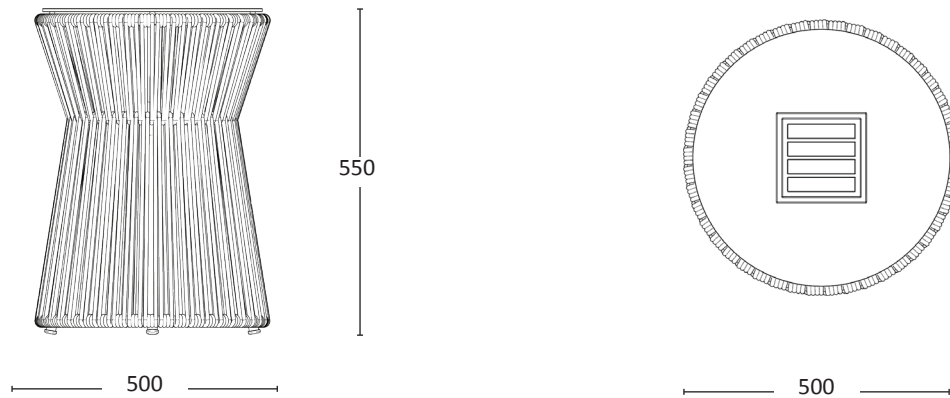
- This product features woven rope sides over a powder coated aluminum structure.
- This coffee table features a solar-powered integrated LED lighting unit.
- The materials and surface treatments are suitable for indoor and outdoor use.

## TPOLOGY



---

## CASTILLO SERIES



### Dimensions:

**Width:** 500 mm / 19.1"

**Depth:** 500 mm / 19.1"

**Height:** 550 mm / 21.2"

### Product Description:

- This product features woven rope sides over a powder coated aluminum structure.
- This coffee table features a solar-powered integrated LED lighting unit.
- The materials and surface treatments are suitable for indoor and outdoor use.

ꞑkoleksiyon