

REGENERATING THE WORKSPACES

Chairs, Armchairs and Sofas





TASK CHAIRS

6	Allegro
10	Anitta
14	Clarus
18	Dastan
24	Kind
28	Mono
32	Sava
36	Tola
42	Tristan

CHAIRS

48	Asanda
54	Cantata
58	Gazebo
60	Halia
64	Helen
68	Miranda
74	Zenith

POUF & TABLE

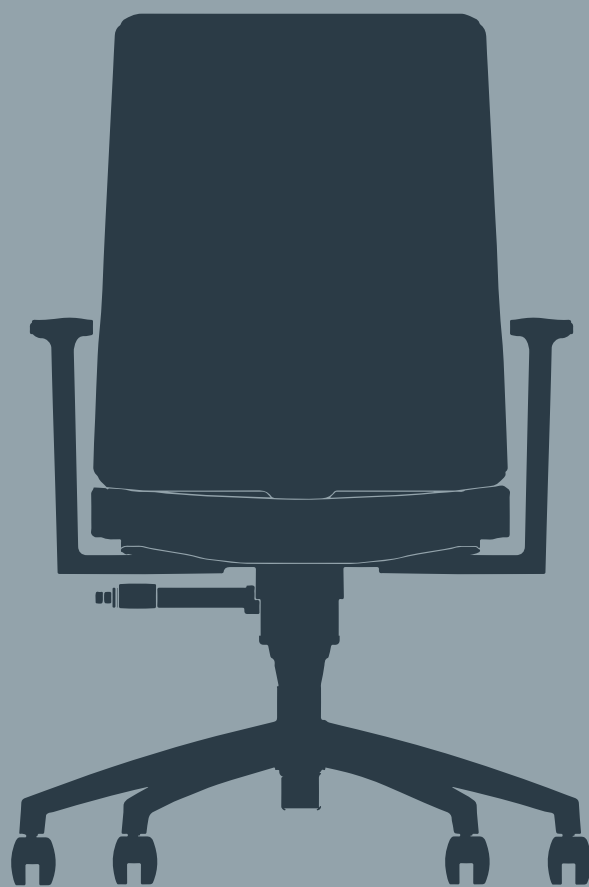
202	Anatole
206	Anatole Stool
212	Mickey
214	Mona
216	Mouse
220	Redlac
224	Solis
228	Stair Chair
230	Suri

LOUNGE CHAIRS

- 86** Halia
- 84** Monte Cristo
- 88** Sole

SOFAS

- | | | | |
|------------|------------------|------------|-------------|
| 94 | Almond | 150 | Madrigal |
| 98 | Ballad | 154 | Oscar |
| 102 | Capella | 158 | Plan |
| 106 | Dilim | 162 | Revan |
| 110 | Diner | 166 | Roma |
| 114 | Duende | 170 | Salve |
| 118 | Flamingo | 172 | Serdivan |
| 122 | Gazel | 176 | Simplissimo |
| 126 | Hanoba | 180 | Sway |
| 130 | İkaros | 184 | Tamina |
| 134 | Lilia | 188 | Tellasmarr |
| 138 | Liliana | 192 | Tulip |
| 142 | Line | 196 | Vienna |
| 146 | Madrigal Chester | | |



work chairs

ALLEGRO

Design | Massimo Costaglia & Giulio Mazzanti

Allegro is an extremely lightweight and innovative work chair designed for the next generation of workplace design. Designed in a whole form, the breathable mesh fabric of the back and seat provides ease of use.





It has 5 star base designed for soft floors, integrated with fixed plastic arms, mesh seat and back in 2 color alternatives, aluminum polished or black plastic star base. When using the simple mechanism, the seating position is at a single angle. Height adjustable. It is designed with a monolithic frame shell, available in black or white, combining front and back for lightness. The design features a self-assembled tilt mechanism with very lightweight features and a large 710 mm diameter star foot.





ALLEGRO TILT BLACK / WHITE

L: 700 mm

D: 700 mm

H: 970 mm



ANITTA

Design | Faruk Malhan

Anitta, has a comfortable and serene representation power with its design line and technical features. The special form of the seat and armrest backrest attracts attention.





Anitta office chairs are designed for offices and public areas. Seating and the back can be upholstered in fabric or leather. Seminar chairs have a writing table option and epoxy painted metal legs. In the work seats, the height can be adjusted with a gas column. Metal star leg and black





ANITTA S2 EXECUTIVE HIGH CHAIR

L: 727 mm
D: 768 mm
H: 1116 mm



ANITTA S2 MANAGER LOW CHAIR

L: 727 mm
D: 758 mm
H: 940 mm



ANITTA S2 MEETING HIGH CHAIR

L: 727 mm
D: 738 mm
H: 1085 mm



ANITTA S2 MEETING LOW CHAIR

L: 727 mm
D: 715 mm
H: 915 mm



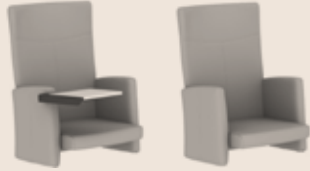
ANITTA S2 VISITOR HIGH CHAIR

L: 731 mm
D: 738 mm
H: 1062 mm



ANITTA S2 VISITOR LOW CHAIR

L: 731 mm
D: 715 mm
H: 892 mm



ANITTA S1 KONFYZTABLALI
/ SO KONFYZTABLASIZ

L: 645 mm
D: 720 mm
H: 775 mm



ANITTA S0 KNFKLT AYAK DIS / KNFKLT AYAK ORT YTL
/ KNFKLT AYAK ORT YTSZ

L: 40 / 135 / 90 mm
D: 397 mm
H: 260 mm



CLARUS

Design | S.I. Design

Clarus is designed to meet all the different usage needs in working environments under one series. Appealing to many different sectors and levels, the design provides ease of movement with its dynamic structure.





There are different models in the design. The back frame is plastic and is available with mesh options. The back can also be selected as fully upholstered.

The seat can be upholstered in fabric or leather, with depth adjustment and lumbar support. Armrests are available in different mobility with 3D features. Black plastic or aluminum metal star legs and black plastic or aluminum star legs with plastic wheels.





CLARUS S0 BLACK 220 /
BYZ 220
L: 710 mm
D: 660 mm
H: 1000 mm



CLARUS S0 BLACK 220 EXTENSION
/ BYZ 220 EXTENSION
L: 710 mm
D: 660 mm
H: 1100 mm



CLARUS S1 BLACK 230 /
BEYAZ 230
L: 710 mm
D: 660 mm
H: 1000 mm



DASTAN

Design | Faruk Malhan

For executive and operational uses, Dastan is an economical product that appeals to SMEs and new entrepreneurs. The mesh fabric back ensures a comfortable fit for long work hours. Thanks to the variety of types, it helps to ensure uniformity in office spaces.





Fabric or leather seat and fabric, leather or mesh back alternatives are available. All products are equipped with a synchronous mechanism and executive seats also have seat depth adjustment. Plastic material is used for star legs. Fixed or height-adjustable armrests are also available in all models. Other legs are epoxy painted or chrome plated metal.









DASTAN S2 18 MIS SN K1P1
L: 597 mm
D: 672 mm
H: 868 mm



DASTAN S1 21 MIS SN K1P1
L: 597 mm
D: 672 mm
H: 868 mm



DASTAN S2 22 MIS SN K1T1
L: 621 mm
D: 663 mm
H: 868 mm



DASTAN S1 25 MIS SN K1T1
L: 621 mm
D: 663 mm
H: 868 mm



DASTAN S2 29 OPRT
L: 697 mm
D: 682 mm
H: 815 mm



DASTAN S3 30 OPRT
L: 685 mm
D: 673 mm
H: 950 mm



DASTAN S1 33 OPRT
L: 685 mm
D: 673 mm
H: 950 mm



DASTAN S3 34 OPRT
L: 685 mm
D: 673 mm
H: 950 mm



DASTAN S1 37 OPRT
L: 685 mm
D: 673 mm
H: 950 mm



DASTAN S1 43 YONT
L: 685 mm
D: 673 mm
H: 1030 mm



DASTAN S3 44 YONT
L: 685 mm
D: 673 mm
H: 1030 mm



HALIDASTAN S3 45 YONT
L: 685 mm
D: 673 mm
H: 1100 mm



DASTAN S1 47 YONT
L: 685 mm
D: 673 mm
H: 1030 mm



DASTAN S3 54 USTYN
L: 685 mm
D: 673 mm
H: 1245 mm



DASTAN S3 55 YONT
L: 685 mm
D: 673 mm
H: 1245 mm



DASTAN S1 57 USTYN
L: 685 mm
D: 673 mm
H: 1245 mm

KIND

Design | Koleksiyon Design House

The Kind chair series design includes different models in working, executive, guest and meeting types.





The back surface can be upholstered or mesh. The seat can be upholstered. There are metal or plastic armrest options. The seat depth is adjustable and the back is height adjustable. Legs are aluminum





KIND SO K204 B
L: 680 mm
D: 675 mm
H: 1021 mm



KIND SO K204 BPL
L: 680 mm
D: 675 mm
H: 1210 mm



KIND SO K204 C
L: 680 mm
D: 675 mm
H: 1021 mm



KIND SO K204 CPL
L: 680 mm
D: 675 mm
H: 1210 mm



MONO

Design | Nahu R&D

Mono provides a simple elegant design that comes in mid or high back as well as stationary legs or 5 star base.





It has a fabric-covered seat, mesh back, plastic frame and armrests, plastic star base and casters. Synchronous mechanism with multiple locking points, back and forth front adjustment and angle adjustment are offered on the task chairs. Back frame is polypropylene and offers fire resistant mesh or mesh netting options. The back can also be selected as fully upholstered. Armrests; fixed, 1D, 2D, 3D and 4D features are offered in different motion capabilities. The lumbar support is height adjustable,





MONO HIGH BACK
L: 800 mm
D: 800 mm
H: 1150 mm



MONO LOW BACK
L: 800 mm
D: 800 mm
H: 1100 mm



MONO VISITOR
L: 700 mm
D: 700 mm
H: 1000 mm



SAVA

Design | Faruk Malhan

The original and elegant design of the back frame and the feeling of lightness provided in the chair is one of the most important elements of this series. Ergonomics Certified Sava seat, the wider than usual back frame provides a comfortable enveloping feeling in this area.





It has a fabric or leather-covered seat and a mesh fabric back. The wider than normal back frame allows the mesh fabric to have a more effective tension, giving a much more comfortable hug to the waist and back. Guest and meeting chairs with the same feature are also included in the series with the short back feature. This series offers different possibilities such as adjustable armrests, lumbar support and back and forth adjustment of the seating font. Working chairs have a foot mechanism.





SAVA SO YS 80
L: 663 mm
D: 612 mm
H: 775 mm



SAVA S1 YS 71
L: 660 mm
D: 710 mm
H: 1100 mm



SAVA S1 YS 70
L: 660 mm
D: 710 mm
H: 1100 mm



SAVA S1 MS 23VY
L: 577 mm
D: 608 mm
H: 897 mm



SAVA S1 MS 25VY
L: 618 mm
D: 557 mm
H: 897 mm



SAVA S1 TS 30KY
L: 681 mm
D: 664 mm
H: 847 mm



SAVA S1 MS 21VY
L: 577 mm
D: 608 mm
H: 897 mm



TOLA

Design | f/p design

Tola is a soft and inviting alternative to the classic chair for contemporary look and feel. The chair's design feature of overlapping shells resembles a spine.





There are executive, meeting, working and visitor chair types. The body of the chair, which is also a design feature of the chair, consists of two or three overlapping shells. The armrests are also integrated into this aesthetic shell form. Star legs are recommended in metal aluminum. An optional continuation of the design aesthetics executive areas is the head rest. By adding one more metric bolt to the short back, a high-backed executive chair is created.









TOLA S1 EXECUTIVE CHAIR
L: 706 mm
D: 726 mm
H: 1190 mm



TOLA S1 MANAGER CHAIR
L: 697 mm
D: 682 mm
H: 1104 mm



TOLA S1 MN MEETING CHAIR
L: 697 mm
D: 682 mm
H: 1145 mm



TOLA S1 OP MEETING CHAIR
L: 697 mm
D: 682 mm
H: 925 mm



TOLA S1 OPERATOR CHAIR
L: 697 mm
D: 682 mm
H: 885 mm



TOLA S1 VISITOR CHAIR
L: 700 mm
D: 669 mm
H: 919 mm



TRISTAN

Design | Eckhard Hansen & Gerhard Reichert

Designed by Eckhard Hansen & Gerhard Reichert, Tristan combines aesthetics and ergonomics with a slim back inspired by the undulating structure of a seashell. The simplicity and visual integrity of its design adds an aesthetic feature to collective spaces.





Plastic and upholstered back options are available. The seat is upholstered in fabric or leather. Epoxy painted or chrome plated metal leg options are available. Some also come with a black plastic wheel.





TRISTAN S6 21NDS
L: 576 mm
D: 568mm
H: 843 mm



TRISTAN S6 21NVY
L: 600 mm
D: 600 mm
H: 840 mm



TRISTAN S6 23NDS
L: 576 mm
D: 610 mm
H: 845 mm



TRISTAN S6 23NVY
L: 600 mm
D: 560 mm
H: 840 mm

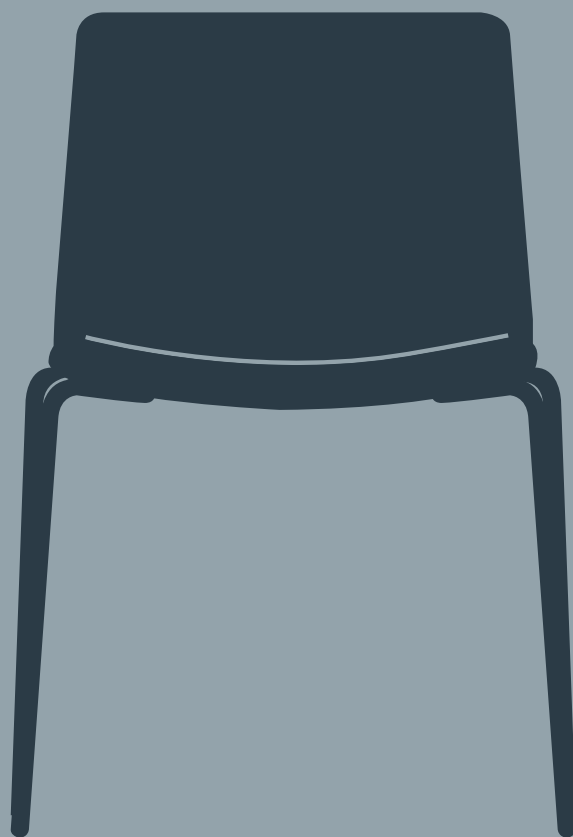


TRISTAN S6 25NDS
L: 576 mm
D: 548 mm
H: 853 mm



TRISTAN S6 25NVY
L: 600 mm
D: 560 mm
H: 845 mm





Guest

ASANDA

Design | Faruk Malhan

Designed for common areas, the Asanda chair series can be interlocked with each other thanks to its special and elegant leg structure patented by Koleksiyon and brings a secure connection for waiting area seating





The seat come in an array of leather and fabric options. The legs are epoxy painted or chrome plated metal with plastic feet. Foldable writing tablets, shelves under the seat for books and bags can be added to Asanda. The chairs can be brought side by side and interlock with each other. The feet are fixed by interlocking with each other. There are seminar, bar, visitor and common area options. The chairs are also stackable,









ASANDA S2 MISAFIR S SWISS
L: 512 mm
D: 574 mm
H: 819 mm



ASANDA S2 SBSC
L: 624 mm
D: 584 mm
H: 838 mm



ASANDA S2 SG10
L: 573 mm
D: 562 mm
H: 808 mm



ASANDA S2 SS DYT R DF
L: 602 mm
D: 724 mm
H: 893 mm



ASANDA S2 SS KYT L
L: 636 mm
D: 666 mm
H: 844 mm



ASANDA S2 MISAFIR S AA
L: 512 mm
D: 545 mm
H: 873 mm



ASANDA S2 BAR S KLCKSZ
L: 652 mm
D: 593 mm
H: 1144 mm



ASANDA S2 KLCKL KA KR /
KLCKL KA EPKS
L: 636 mm
D: 571 mm
H: 844 mm



ASANDA S2 KLCKSZ KA KR /
KLCKSZ KA EPKS
L: 636 mm
D: 571 mm
H: 844 mm



CANTATA

Design | Faruk Malhan

Offering smart solutions for workspaces, the members of the Cantata chair product group offer a stylish and organized look when used together.





Cantata has an exclusive patent for its special foot design and connection systems that stand out with the creative solutions it offers for mounting. It has a plastic backrest, seat surface and epoxy painted or chromed metal legs in different color options. The special patented writing tray of the seminar chair can be rotated around the table body. In this way, it can be used regardless of left or right





CANTATA SO SANDALYE

L: 550 mm

D: 453 mm

H: 850 mm



CANTATA S1 SS DYT PF T

L: 529 mm

D: 719 mm

H: 859 mm



HALIA

Design | Studio Kairos

Halia by Studio Kairos has a soft design approach for executive, work, visitor and meeting chairs. It attracts attention in workspaces with its unique form and adapts to many areas thanks to its wide range of product family.





The seat and back are available in different colored fabric or leather, and the legs are available in epoxy painted metal or chrome. The design, which has two different back options, high and low. Leg alternatives, vary as movable and fixed.









HALIA S2 CH01_DV_BFM_ALS_GP
L: 663 mm
D: 612 mm
H: 775 mm



HALIA S2 CH01_DV_SB_GP
L: 663 mm
D: 611 mm
H: 770 mm



HALIA S2 CH01_DV_SL_GP_H440
L: 617 mm
D: 599 mm
H: 759 mm



HALIA S2 CH01_MM_BFM_SCH_CSF
L: 697 mm
D: 685 mm
H: 805 mm



HALIA S2 CH01_OP_1TM_SCH_CSF
L: 697 mm
D: 708 mm
H: 751 mm



HALIA S2 CH01_OP_BM_SCH_CSF
L: 697 mm
D: 982 mm
H: 726 mm



HALIA S2 CH01_VSTR_BFM_SCH_PNG
L: 701 mm
D: 669 mm
H: 817 mm



HALIA S2 CH02_MA_1TM_SCH_CSF
L: 697 mm
D: 740 mm
H: 1006 mm



HALIA S2 CH02_MM_BFM_SCH_CSF
L: 697 mm
D: 720 mm
H: 1050 mm



HALIA S2 CH03_EM_BFM_SCH_CSF
L: 697 mm
D: 715 mm
H: 1185 mm



HALIA S2 CH03_MA_1TM_SCH_CSF
L: 697 mm
D: 676 mm
H: 1151 mm



HALIA S2 CH04_EX_1TM_SCH_CSF
L: 697 mm
D: 707 mm
H: 1151 mm



HALIA S2 CH05_SV_SB_GP
L: 725 mm
D: 629 mm
H: 745 mm



HALIA S2 CH01_SV_WL_GF_H440
L: 663 mm
D: 611 mm
H: 752 mm



HALIA S2 CH02_SV_WL_GF
L: 663 mm
D: 672 mm
H: 972 mm

HELEN

Design | Studio Kairos

Named after Greek mythology, the Helen chair represents elegance. Designed by Studio Kairos, Helen has a light and soft design. With its slender legs, integrated back and seat, it is as comfortable as it is elegant.





They come with a choice of fabric or leather upholstery and plastic seating. Stitch detail on the outer surface of the back. The angled leg structure has epoxy painted metal, chrome and wood options. Chair is ideal for all recreational spaces as well as café and bistro areas.





HELEN S1 SANDALYE SB10 PLS /
SB10 AHSAP
L: 547 mm
D: 571 mm
H: 1081 mm



HELEN S1 SANDALYE SG10 PLS /
SG10
L: 542 mm
D: 572 mm
H: 791 mm



HELEN SO SANDALYE SH10
L: 470 mm
D: 539 mm
H: 820 mm



HELEN S1 SANDALYE SWISS
L: 487 mm
D: 548 mm
H: 764 mm



MIRANDA

Design | Faruk Malhan

Designed by Faruk Malhan, Miranda is specially designed for multifunctional uses offers a comfortable sit thanks to its back and armrest design. It is an ideal choice for offices with its stylish appearance as well as comfort.





Upholstery is leather or fabric alternative. It has an integrated back and armrest design. Epoxy painted metal, chrome and wooden leg options are available. Miranda's four different foot alternatives make it versatile in use.









MIRANDA S2 MEETING CHAIR BM
L: 630 mm
D: 697 mm
H: 875 mm



MIRANDA S2 OPERATOR CHAIR
L: 630 mm
D: 694 mm
H: 829 mm



MIRANDA S2 RESTING CHAIR
WOODLEG
/ RESTING CHAIR WOODLEG K
L: 630 mm
D: 611 mm
H: 801 mm



MIRANDA S2 VISITOR CHAIR UA
/ VISITOR CHAIR UA K
L: 630 mm
D: 585 mm
H: 860 mm



MIRANDA S2 VISITOR CHAIR C
LEG L: 630 mm
D: 572 mm
H: 895 mm



MIRANDA S2 VISITOR CHAIR FXD
L: 669 mm
D: 700 mm
H: 850 mm



MIRANDA S2 VISITOR CHAIR
WOODLEG
/ VISITOR CHAIR WOODLEG K
L: 630 mm
D: 577 mm
H: 895 mm



MIRANDA S2 VISITOR METALLEG / VISITOR Q ML
/ VISITOR METALLEG WLC / VISITOR Q METALLEG WLC
L: 630 mm
D: 600 mm
H: 857 mm



ZENITH

Design | Koleksiyon Design House

A chair series that stands out with its extraordinary lines...
Offering smart solutions, members of the Zenith product family
offer a stylish and organized look when used together.





Zenith is a chair developed for areas such as lecture halls, classrooms and training rooms in the education sector. Plastic or upholstered body and metal with feet.





ZENITH SO SB10
L: 602 mm
D: 602 mm
H: 1202 mm



ZENITH SO SG10
L: 573 mm
D: 542 mm
H: 780 mm



ZENITH SO ZEPLSOPR / ZEYDFOPR
L: 679 mm
D: 661 mm
H: 763 mm

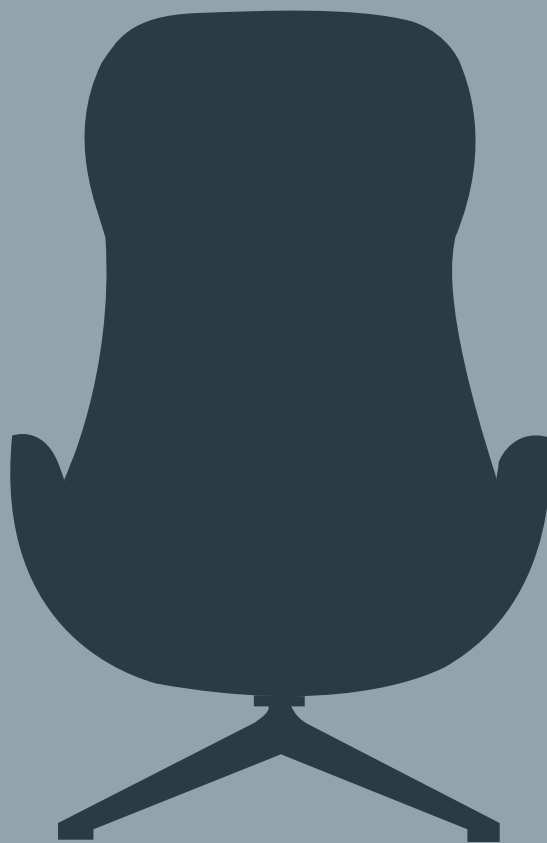


ZENITH S1 SS DYT PF T /
SS DYT YDF T
L: 653 mm
D: 612 mm
H: 785 mm



ZENITH S1 SS DYT R YDF T
L: 573 mm
D: 573 mm
H: 785 mm





Lounge Chairs

HALIA

Design | Studio Kairos

Inspired by fairy wings, Studio Kairos' Halia series stands out with its unique form and distinctive design. Halia armchair takes on a refined form with its body and wooden legs that can change its shell with different color and fabric alternatives.





The seat and back can be selected in different colored fabric or leather. The legs of the guest armchair are made of wood, while the legs of the armchair are available in wood or epoxy painted metal. The armchairs have a swivel mechanism with position protector,





HALIA S1 LOW BACK ARMCHAIR /
LOW BACK ARMCHAIR AA

L: 728 mm
D: 767 mm
H: 775 mm



HALIA S1 HIGH BACK ARMCHAIR
/ HIGH BACK ARMCHAIR AA

L: 728 mm
D: 785 mm
H: 1120 mm



HALIA S0 OTTOMAN POUF METAL
LEG / WOODEN LEG

L: 600 mm
D: 600 mm
H: 400 mm



MONTE CRISTO

Design | Faruk Malhan

Monte Cristo, designed by Faruk Malhan, is an armchair that brings traditional lines to modern designs. It can be used in workspaces, especially for entertaining guests, while in living rooms it can accompany different models of seating groups.





The seat and back can be upholstered in fabric or leather. Legs are polished on solid wood. There are 2 different types: low and high backed.





MONTE CRISTO S6 C2
L: 639 mm
D: 714 mm
H: 967 mm



MONTE CRISTO S6 B2
L: 639 mm
D: 689 mm
H: 726 mm



SOLE

Design | Studio Kairos

sole is a sleek compact chair that comes in swivel with rocking feature or fixed. It is a compact and aesthetic seating for home, office, various waiting areas, hospitals, hotels, educational institutions and libraries.





It is offered with all fabric, leather and artificial leather alternatives recommended in the chart. Anthracite epoxy paint and chrome color selection is always available for metal legs. The piping used in the products are always black leather. This series includes two types of seats, a fixed version and a version with a swivel





SOLE SO FX ARMCHAIR

L: 740 mm

D: 771 mm

H: 757 mm



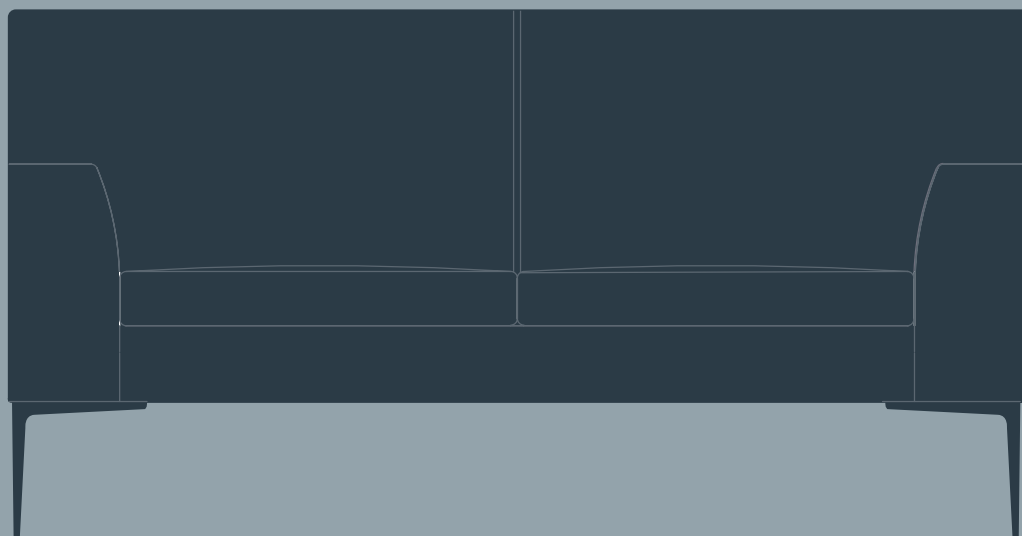
SOLE SO RMR ARMCHAIR

L: 740 mm

D: 771 mm

H: 757 mm





sofas

ALMOND

Design | Faruk Malhan

Almond sofa family, where you can create a stylish, comfortable and most suitable composition for your home with its different modules.





Designed with high density sponges, the Almond family has a medium hard seat with additional fiber wrapping, while the angled stance of the solid legs provides a visual delight.





ALMOND SO 96
L: 965 mm
D: 820 mm
H: 687 mm



ALMOND SO 156
L: 1565 mm
D: 820 mm
H: 687 mm



ALMOND SO 216
L: 2165 mm
D: 820 mm
H: 687 mm



ALMOND SO 78 SOL / 78 SAG
L: 785 mm
D: 1220 mm
H: 687 mm



ALMOND SO TAKIM 1
L: 2170 mm
D: 1220 mm
H: 687 mm



ALMOND SO 138 SOL / 138 SAG
L: 1385 mm
D: 820 mm
H: 687 mm



ALMOND SO 198 SOL / 198 SAG
L: 1985 mm
D: 820 mm
H: 687 mm



BALLAD

Design | Faruk Malhan

Ballad offers a design with comfortable cushions and slim feet in a lightweight body for living spaces. Careful attention to design has come into play at every stage to lighten this sofa and increase its comfort.





It creates an elegant atmosphere in its environment with its epoxy painted thin metal legs. The seat and back can be upholstered in fabric, faux or real leather, allowing for different combinations.





BALLAD SO 92
L: 920 mm
D: 800 mm
H: 780 mm



BALLAD SO 151
L: 1510 mm
D: 800 mm
H: 780 mm



BALLAD SO 210
L: 2100 mm
D: 800 mm
H: 780 mm



CAPELLA

Design | Faruk Malhan

A sofa that stands out with its slender leg structure and is designed in the finest lines that the mastery of upholstery workmanship can come.





Capella, which is preferred for offices, is designed within cushion and with the thinnest skeleton structure possible. The feet also have extremely elegant and fine lines by applying a specialty cut form to the steel.





CAPELLA SO 80 N / 80

L: 810 mm

D: 803 mm

H: 792 mm



CAPELLA SO 139 N / 139

L: 1396 mm

D: 803 mm

H: 792 mm



CAPELLA SO 199 N / 199

L: 1996 mm

D: 803 mm

H: 792 mm



DILIM

Design | Jan Wertel & Gernot Oberfell

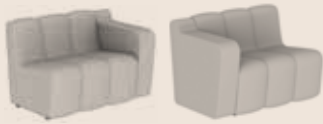
Designed by Jan Wertel and Gernot Oberfell, Slice is a modular sofa designed for office, bar, hotel and waiting areas. With different color options, combinations suitable for all kinds of design tastes can be created.





Slice sofa; It responds to many different needs with its various types. The back-to-back model creates more seating in offices or waiting areas, while the high-back model helps to isolate noise or create a cellular environment in open offices.





DILIM SO ADS105,DK / DK,ADS105
L: 1250 mm
D: 758 mm
H: 766 mm



DILIM SO ADS105,PK / PK,ADS105
L: 1400 mm
D: 758 mm
H: 766 mm



DILIM SO ADS105
L: 1050 mm
D: 758 mm
H: 766 mm



DILIM SO ADS140
L: 1400 mm
D: 758 mm
H: 766 mm



DILIM SO ADS175
L: 1750 mm
D: 758 mm
H: 766 mm



DILIM SO ADS210
L: 2100 mm
D: 758 mm
H: 766 mm



DILIM SO ADS55
L: 550 mm
D: 758 mm
H: 766 mm



ROMA SO TP008 Z
L: 1994 mm
D: 925 mm
H: 810 mm



DILIM SO AS140
L: 1400 mm
D: 820 mm
H: 1200 mm



DILIM SO AS175
L: 1750 mm
D: 820 mm
H: 1200 mm



DILIM SO CT140
L: 1400 mm
D: 1404 mm
H: 766 mm



DILIM SO CT175
L: 1750 mm
D: 1404 mm
H: 766 mm



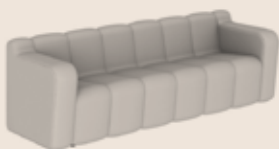
DILIM SO DK,ADS105,P-
K,ADS105,DK
L: 2850 mm
D: 758 mm
H: 766 mm



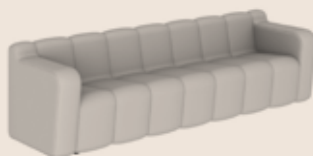
DILIM SO DK,ADS105,PK,ADS140,DK /
DK,ADS140,PK,ADS105,DK
L: 3200 mm
D: 758 mm
H: 766 mm



DILIM SO DK,ADS175,DK
L: 2150 mm
D: 758 mm
H: 766 mm



DILIM SO DK,ADS210,DK
L: 2500 mm
D: 758 mm
H: 766 mm



DILIM SO DK,ADS245,DK
L: 2850 mm
D: 758 mm
H: 766 mm



DILIM SO KSP 72 POUF / 74 POUF
L: 727 / 747 mm
D: 727 / 747 mm
H: 437 / 585 mm



DILIM SO PK,ADS105,DK /
DK,ADS105,PK
L: 1600 mm
D: 758 mm
H: 766 mm



DILIM SO RADS 143
L: 1439 mm
D: 854 mm
H: 766 mm



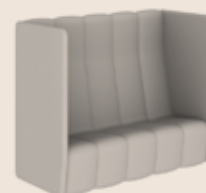
DILIM SO RADS 203
L: 2036 mm
D: 961 mm
H: 766 mm



DILIM SO RADS 74
L: 745 mm
D: 786 mm
H: 766 mm



DILIM SO YD02,YS140,YD02 KOMP
L: 1520 mm
D: 820 mm
H: 1500 mm



DILIM SO YD02,YS175,YD02
KOMP
L: 1870 mm
D: 820 mm
H: 1500 mm

DINER

Design | Faruk Malhan

Diner by Faruk Malhan is a sofa designed with a refined approach for use in public spaces such as restaurants and cafes. It is designed to be the size of a chair but with the comfort of a sofa.





Diner's seating height is designed higher than standard sofas to accommodate dining tables. For this reason, the back is in a steeper line compared to standard seating units. Diner, which is offered with short and high back alternatives, can meet different needs according to the areas thanks to its modular structure





DINER SO KS160
L: 1600 mm
D: 769 mm
H: 791 mm



DINER SO KS240
L: 2400 mm
D: 769 mm
H: 791 mm



DINER SO YS160
L: 1600 mm
D: 769 mm
H: 993 mm



DINER SO YS240
L: 2400 mm
D: 769 mm
H: 993 mm



DUENDE

Design | Faruk Malhan

A family of armchairs that can be passed down from generation to generation, blending simple and classic design.





Duende stands out in its space with its thin metal legs and elegant upholstery workmanship. Designed for executive rooms, Duende also has different fabric, artificial and real leather color options.





DUENDE SO 104
L: 1040 mm
D: 840 mm
H: 680 mm



DUENDE SO 164
L: 1640 mm
D: 840 mm
H: 680 mm



DUENDE SO 224
L: 2240 mm
D: 840 mm
H: 680 mm



FLAMINGO

Design | Faruk Malhan

Flamingo saves space with its slim arm and back composition and offers the advantage of use in small spaces.





Designed for executive rooms and waiting areas, Flamingo Armchair can also respond to different design demands with different fabric and leather options. It offers a stylish look with its metal legs that bend in a special form.





FLAMINGO S3 90N
L: 900 mm
D: 802 mm
H: 701 mm



FLAMINGO S3 160N
L: 1600 mm
D: 802 mm
H: 701 mm



FLAMINGO S3 200N
L: 2000 mm
D: 802 mm
H: 701 mm



GAZEL

Design | Faruk Malhan

Gazel is inspired by a design language that blends modern life with Anatolian culture, where you will feel the comfort of your home in your offices.





The differentiation of Gazel sofa with options such as single, double and triple, upholstered arm and bookcase arm, upholstered back or bookcase back makes the design special. The wooden detail that forms the arm and back section supports the back area and emphasizes functionality with its ergonomic form.





GAZEL S2 00ASDK178
L: 1000 mm
D: 1350 mm
H: 785 mm



GAZEL S2 00ASAK178
L: 1000 mm
D: 1780 mm
H: 640 mm



GAZEL S2 00ASAK253
L: 2530 mm
D: 1000 mm
H: 640 mm



GAZEL S2 00ASDK178
L: 1000 mm
D: 1780 mm
H: 640 mm



GAZEL S2 00ASDK253
L: 2530 mm
D: 1000 mm
H: 640 mm



GAZEL S2 00DSAK100U
L: 1000 mm
D: 1364 mm
H: 640 mm



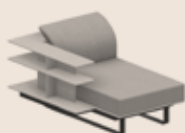
GAZEL S2 00DSDK100U
L: 1000 mm
D: 1350 mm
H: 785 mm



GAZEL S2 00DSDK178
L: 1000 mm
D: 1780 mm
H: 640 mm



GAZEL S2 00DSDK253
L: 2530 mm
D: 1000 mm
H: 640 mm



GAZEL S2 AKAS00100U
L: 1351 mm
D: 1000 mm
H: 785 mm



GAZEL S2 AKAS00178
L: 1000 mm
D: 1780 mm
H: 640 mm



GAZEL S2 AKAS00253
L: 2530 mm
D: 1000 mm
H: 640 mm



GAZEL S2 AKASAK201
L: 2010 mm
D: 1000 mm
H: 640 mm



GAZEL S2 AKASAK276
L: 2760 mm
D: 1000 mm
H: 640 mm



GAZEL S2 AKDS00100U
L: 1000 mm
D: 1364 mm
H: 640 mm



GAZEL S2 AKDSAK201
L: 2010 mm
D: 1000 mm
H: 640 mm



GAZEL S2 AKDSAK276
L: 2760 mm
D: 1000 mm
H: 640 mm



GAZEL S2 DKAS00178
L: 1780 mm
D: 1000 mm
H: 640 mm



GAZEL S2 DKAS00253
L: 2530 mm
D: 1000 mm
H: 640 mm



GAZEL S2 DKDS00100U
L: 1000 mm
D: 1350 mm
H: 785 mm



GAZEL S2 DKDS00178
L: 1000 mm
D: 1780 mm
H: 640 mm



GAZEL S2 DKDS00253
L: 2530 mm
D: 1000 mm
H: 640 mm



GAZEL S2 DKDSDK201
L: 2010 mm
D: 1000 mm
H: 640 mm



GAZEL S2 DKDSDK276
L: 2760 mm
D: 1000 mm
H: 640 mm

HANOBA

Design | Faruk Malhan

Hanoba is an affordable seating group designed with a modern play on the tufted sofa look.





Drawing attention with its cubic form, Hanoba's special quilted seams on the back design add ergonomics as well as aesthetics to the design. The sofa is recommended for offices designed in different styles with single, double and triple





HANOBA S1 92
L: 920 mm
D: 840 mm
H: 710 mm



HANOBA S1 160
L: 1600 mm
D: 840 mm
H: 710 mm



HANOBA S1 200
L: 2000 mm
D: 840 mm
H: 710 mm

ZONE
ERE USES A
R PRODUCT

OUR VISION IS TO GROW OUR BUSINESS WHILE
REDUCING OUR ENVIRONMENTAL FOOTPRINT AND
INCREASING OUR SOCIAL IMPACT

RE WORKING TO CREATE A
TER FUTURE EVERYDAY

E TO INSP
ADD



IKAROS

Design | Koray Malhan

It's a seating area, a coffee table and a desk. Ikaros, is a seating unit designed as an alternative to the use of tables in gathering and collaborative spaces. It can be used both in the center of workspaces and in relaxation areas.





Designed for social uses, such as informal meeting spaces. All the horizontal surfaces of the sofa extending out from the sides can be used as a surface area. In particular, the wide wing-shaped plane at the back is designed at table height.



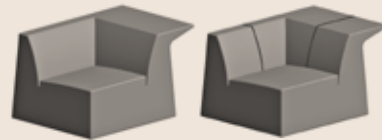


IKAROS SO 112 SOL

L: 1170 mm

D: 900 mm

H: 750 mm

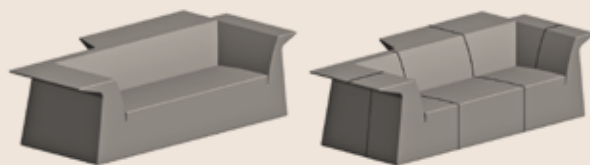


IKAROS SO 112 SAG

L: 697 mm

D: 682 mm

H: 1104 mm



IKAROS SO 240

L: 2465 mm

D: 1130 mm

H: 730 mm



LILIA

Design | Faruk Malhan

The Lilia armchair creates an isolated space with its back that surrounds the seat from three sides, while offering a healthy workspace with antibacterial and antimicrobial upholstery options.





The seating group, which attracts attention with its simple design, has alternatives that offer single, double or triple seating.





LILIA SO 78Y
L: 786 mm
D: 796 mm
H: 882 mm



LILIA SO 143Y
L: 1436 mm
D: 796 mm
H: 882 mm



LILIA SO 208Y
L: 2086 mm
D: 796 mm
H: 882 mm



LILIANA

Design | Faruk Malhan

Rising on special steel profile slender legs, Liliana armchair is designed for different purposes that will offer sitting, waiting and meeting opportunities.





The perimeter walls have been adjusted to a height of 1160 mm to provide more sheltered use in common areas, during meetings or waiting times.
A wide range of fabrics as well as a wide range of artificial leather
seeneęi de sunulmaktadır.





LILIANA SO 72 F / 72 N
L: 724 mm
D: 702 mm
H: 1160 mm



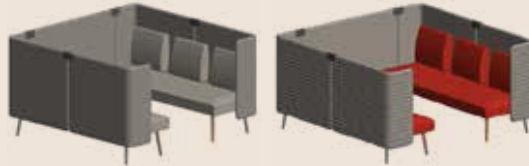
LILIANA SO 136 F / 136 N
L: 1364 mm
D: 702 mm
H: 1160 mm



LILIANA SO 200 F / 200 N
L: 2004 mm
D: 702 mm
H: 1160 mm



LILIANA SO TIP1 F / TIP1 N
L: 2118 mm
D: 1364 mm
H: 1160 mm



LILIANA SO TIP2 F / TIP2 N
L: 2118 mm
D: 2004 mm
H: 1160 mm



LINE

Design | Tristan Lohner

Line Sofa is a sleek contemporary design that embodies wood with fabric in an elegant design.





The seating and backrest modules are designed on a platform standing on very thin legs. In some compositions, this carrier platform can extend beyond the seating area and become a place where accessories and magazines can be placed. The high legs ensure easy cleaning and hygiene. The split cushion and armrest design provide optimum comfort, while the coffee table surfaces are customizable and easy to clean.





LINE SO 80X80 POUF
/ 120x120 POUF
L: 800 / 1200 mm
D: 800 / 1200 mm
H: 440 mm



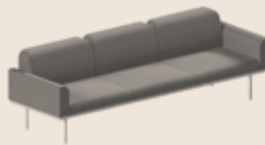
LINE SO 105
L: 1050 mm
D: 800 mm
H: 800 mm



LINE SO 185
L: 1850 mm
D: 800 mm
H: 800 mm



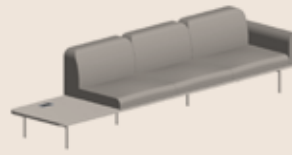
LINE SO 189 PNL
L: 1894 mm
D: 822 mm
H: 1400 mm



LINE SO 265
L: 2650 mm
D: 800 mm
H: 800 mm



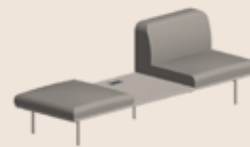
LINE SO 252 SL / 252 SR
L: 2525 mm
D: 800 mm
H: 800 mm



LINE SO 332 SL / 332 SR
L: 3325 mm
D: 800 mm
H: 800 mm



LINE SO 345 ML / 345 MR
L: 3455 mm
D: 1190 mm
H: 800 mm



LINE SO 240 OSP_L / 240 OSP_R
L: 2400 mm
D: 800 mm
H: 782 mm





MADRIGAL CHESTER

Design | Faruk Malhan

Madrigal Chester can be used in harmony with both modern and classic products with its classic design that strengthens its simple line.





This design, which provides seating for one, two and three people with different size options, stands out with its quilted upholstery details and craftsmanship.





MADRIGAL CHESTER S1 108
L: 1086 mm
D: 880 mm
H: 680 mm



MADRIGAL CHESTER S1 168
L: 1686 mm
D: 880 mm
H: 680 mm



MADRIGAL CHESTER S1 228
L: 2286 mm
D: 880 mm
H: 680 mm

MADRIGAL

Design | Faruk Malhan

Madrigal, consisting of sofa and pouf options in different sizes, is ready to meet all your needs at home or in the office.





Available in fabric and leather options, the sofa series offers flexibility to meet any demand with innovative material choices and a back and seat that emphasize comfort. The quilted back design preserves the classic line while the specially shaped legs add to Madrigal's elegant look.





MADRIGAL S1 110
L: 1100 mm
D: 900 mm
H: 680 mm



MADRIGAL S1 202
L: 2020 mm
D: 900 mm
H: 680 mm



MADRIGAL S1 222
L: 2200 mm
D: 900 mm
H: 680 mm



MADRIGAL S1 242
L: 2420 mm
D: 900 mm
H: 680 mm



OSCAR

Design | Studio Kairos

Oscar is available with or without armrests, with alternatives such as triple, double, single and L sectional that can adapt to different living spaces. With all these modular parts, combinations can be created to suit your needs.





Oscar sofa consists of a delicate body supported by a special foam structure and unique metal legs. While the body covering can be preferred as fabric or leather, the characteristic legs are black epoxy. Oscar can also be combined with the pouf of the same series and can be used in offices, lounges, hotels and living environments.





OSCAR SO 99 KOSE
L: 994 mm
D: 994 mm
H: 809 mm



OSCAR SO 105
L: 1050 mm
D: 977 mm
H: 809 mm



OSCAR SO 105 SOL UZAN
/ 105 SAG UZAN
L: 1050 mm
D: 1446 mm
H: 809 mm



OSCAR SO 210 ARA
L: 727 mm
D: 768 mm
H: 1116 mm



OSCAR SO 210
L: 2100 mm
D: 977 mm
H: 809 mm



OSCAR SO 210 SOL / 210 SAG
L: 2100 mm
D: 977 mm
H: 809 mm



PLAN

Design | Metrica

Plan adds dynamism to office environments with its simple foot structure, armrest, back and seat cushion design reflecting the harmony of geometric forms.





Plan Sofa with seating capacity for one, two and three people is produced in fabric, leather and artificial leather options.

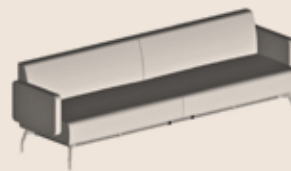




PLAN SO TP001
L: 728 mm
D: 700 mm
H: 770 mm



PLAN SO TP009
L: 1728 mm
D: 700 mm
H: 770 mm



PLAN SO TP013
L: 2528 mm
D: 700 mm
H: 770 mm

REVAN

Design | Faruk Malhan

Revan sofa or loveseat stands out with the mastery of upholstery workmanship and design details at the joints of wooden arms.





It provides warm touches to your living spaces with the softness of the seat and back cushions, quilted details and the natural texture of wood.





REVAN S1 216
L: 2160 mm
D: 870 mm
H: 909 mm



REVAN S1 296
L: 2960 mm
D: 870 mm
H: 909 mm



ROMA

Design | Gabriele e Oscar Buratti

Designed by Buratti Architetti, Roma is a comfortable sofa that emphasizes aesthetics with its round silhouette and elegant legs.





Fabric and leather options allow it to be used in both office and home environments. The back cushion with removable cover allows for easy cleaning. Whether you want to capture elegance in your offices with the leather option or create a warm environment at home with the fabric option. With its different modules, it allows endless compositions, with or without arms, and corner uses.





ROMA SO 100 SOL UZAN
/ 100 SAG UZAN
L: 1200 mm
D: 1400 mm
H: 880 mm



ROMA SO 100 SOL Z UZAN
/ 100 SAG Z UZAN
L: 1265 mm
D: 1400 mm
H: 880 mm



ROMA SO 100 SOL Z
/ 100 SAG Z
L: 1265 mm
D: 1000 mm
H: 880 mm



ROMA SO 80 POUF / 100 POUF
L: 800 / 1000 mm
D: 1000 mm
H: 420 mm



ROMA SO 80 SOL KOSE /
80 SAG KOSE
L: 1000 mm
D: 1000 mm
H: 880 mm



ROMA SO 80 SOL UZAN
/ 80 SAG UZAN
L: 1000 mm
D: 1400 mm
H: 880 mm



ROMA SO TP001 / TP015
L: 2000 / 2400 mm
D: 1000 mm
H: 880 mm



ROMA SO TP008 Z
L: 2530 mm
D: 1000 mm
H: 880 mm



ROMA SO TP004 / TP018
L: 1600 / 2000 mm
D: 1000 mm
H: 880 mm



ROMA SO TP007
L: 2800 mm
D: 1000 mm
H: 880 mm



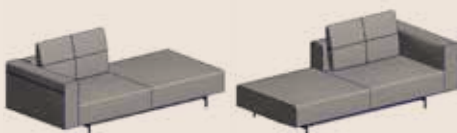
ROMA SO TP002 / TP003
L: 1800 mm
D: 1000 mm
H: 880 mm



ROMA SO TP009 Z / TP010 Z
L: 2265 mm
D: 1000 mm
H: 880 mm



ROMA SO TP011 Z / TP012 Z
L: 2465 mm
D: 1000 mm
H: 880 mm



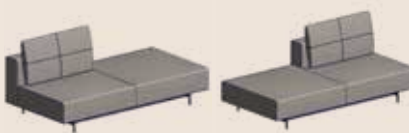
ROMA SO TP019 / TP020
L: 2200 mm
D: 1000 mm
H: 880 mm



ROMA SO TP016 / TP017
L: 2200 mm
D: 1000 mm
H: 880 mm



ROMA SO TP026 / TP027
/ TP030 / TP031
L: 2600 / 3200 mm
D: 1000 mm
H: 880 mm



ROMA SO TP021 / TP022
L: 2000 mm
D: 1000 mm
H: 880 mm



ROMA SO TP025 Z
L: 3530 mm
D: 1000 mm
H: 880 mm

SALVE

Design | Faruk Malhan

Salve offers a refined look with its special quilted stitching on the body and metal legs.



SIZE
L: 2057 mm
D: 830 mm
H: 755 mm



Salve sofa, which can be suitable for both home and offices, is a unique design with its comfort and fine details.



SERDIVAN

Design | Faruk Malhan

Serdivan combines aesthetic references from the past with today's modernism.





Serdivan sofa is available in fabric, velvet and quilted upholstery options. The curves in the collars add a characteristic feature to the design. As a timeless design object with its simple lines and clear lines, it can be used in different spaces.





BABIL SERDIVAN SO 100
L: 1000 mm
D: 870 mm
H: 829 mm



BABIL SERDIVAN SO 170M SAG
/ 170M SOL
L: 1700 mm
D: 870 mm
H: 829 mm



BABIL SERDIVAN SO 180
L: 1800 mm
D: 870 mm
H: 829 mm



BABIL SERDIVAN SO 220
L: 2200 mm
D: 870 mm
H: 829 mm



BABIL SERDIVAN SO 260
L: 2600 mm
D: 870 mm
H: 829 mm



SIMPLISSIMO

Design | Jean Nouvel

Simplissimo offers a rich simplicity for public spaces. It is a product group designed by Jean Nouvel inspired by simplicity, aesthetics and naturalness.





The Simplissimo series is available in selected faux leather colors. It offers simplicity and aesthetics together with its epoxy painted metal legs in simple form.





SIMPLISSIMO SO CHAIR

L: 485 mm
D: 536 mm
H: 785 mm



SIMPLISSIMO SO LOW CHAIR

L: 590 mm
D: 661 mm
H: 745 mm



SIMPLISSIMO SO LOW LOUNGE

L: 1190 mm
D: 661 mm
H: 745 mm



SIMPLISSIMO SO OTTOMAN 590

L: 590 mm
D: 357 mm
H: 495 mm



SIMPLISSIMO SO OTTOMAN 1190

L: 1190 mm
D: 357 mm
H: 495 mm



SWAY

Design | Koray Malhan

Sway is designed for those who want to make a difference in office environments and waiting areas with its modular design.



SIZE
L: 1977 mm
D: 1977 mm
H: 767 mm



Each module can be coated in a different color to achieve unusual looks. With its S shape and two-sided seating, it provides an innovative approach to waiting areas. Modules can be connected to each other with the apparatus under the skeleton and fixed when desired.







TAMINA

Design | Faruk Malhan

Tamina is a sofa designed for working spaces with its minimalist and comfortable structure. The softness of the back cushion and the depth created by the angle on the seating surface increase comfort. With its different model alternatives and modular structure, it can easily adapt to different environments.





The seat and back can be selected in fabric, leather and faux leather alternatives and the metal legs can be epoxy painted or chrome plated. Sponges with different properties are used in the inner filling of the seat. The covers of the seats in this group are produced as fixed





TAMINA SO 86
L: 860 mm
D: 760 mm
H: 705 mm



TAMINA SO 142
L: 1420 mm
D: 760 mm
H: 705 mm



TAMINA SO 198
L: 1980 mm
D: 760 mm
H: 705 mm



TAMINA SO R115
L: 727 mm
D: 768 mm
H: 1116 mm



TELLASMAR

Design | Faruk Malhan

Tellasmar is a seating group designed for reception units in waiting areas or workspaces.





Produced in different sizes, Tellesmar's elegant leg structure with chrome plated and epoxy painted color alternatives is in harmony with the fine lines of the design. The design aims to enhance the deep seat width and back softness.





TELLASMAR S2 160 KNP
L: 1600 mm
D: 890 mm
H: 748 mm



TELLASMAR S2 180 KNP
L: 1800 mm
D: 890 mm
H: 748 mm



TELLASMAR S2 200 KNP
L: 2000 mm
D: 890 mm
H: 748 mm



TELLASMAR S2 97 KLTK
L: 970 mm
D: 890 mm
H: 748 mm



TULIP

Design | Faruk Malhan

The design of the Tulip sofa stands out with its slim leg structure and elegantly shaped body. The high level of comfort provided by an elegant body is embodied in the quality of the upholstery workmanship.





As well as in homes belonging to different tastes with its classic modern line, in hotels, top executive waiting areas and rooms.





TULIP SO 154 KNP
L: 1546 mm
D: 823 mm
H: 768 mm



TULIP SO 224 KNP
L: 2242 mm
D: 823 mm
H: 768 mm



VIENNA

Design | Jean Nouvel Design

Vienna Armchair is an armchair that stands out with its clear and sharp lines, where you can enjoy high comfort in office environments.



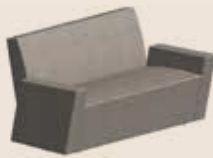


While it attracts attention with its design in front of the office and common areas in offices, it is also very suitable for hospitals and waiting areas.





VIENNA SO 81 KLKT
L: 810 mm
D: 876 mm
H: 792 mm

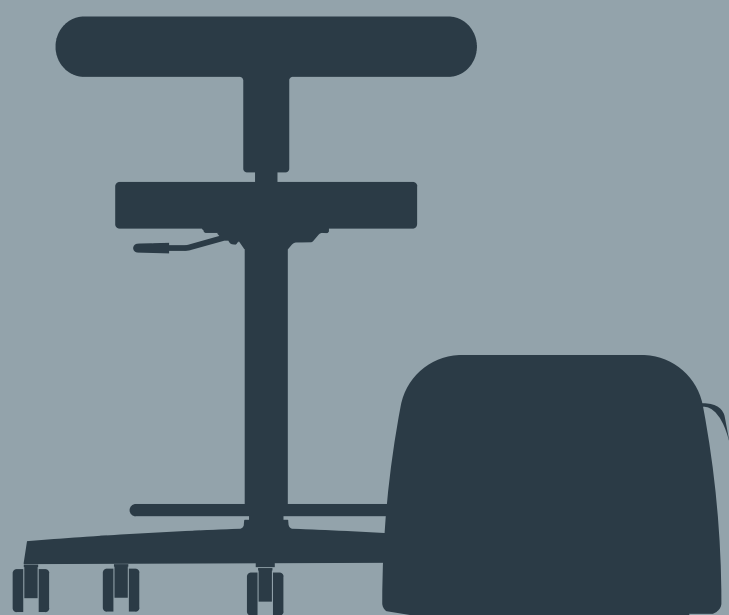


VIENNA SO 150 KNP
L: 1500 mm
D: 876 mm
H: 792 mm



VIENNA SO 210 KNP
L: 2100 mm
D: 876 mm
H: 792 mm





pouf & stool

ANATOLE

Design | Jean-Michel Wilmotte

A modular design that provides seating in different directions in waiting areas and other common areas in offices, allowing multiple users to gather.





The Anatole seating series has three basic modules; the pouf module, with a rotating cylindrical back support, and the other with a rotating curved cylinder as a back support. This unique seating element makes common spaces more fun and colorful with fabric options in alternative colors.

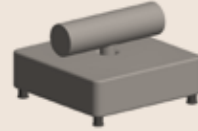




ANATOLE SO ROTATING C SOFA
L: 1060 mm
D: 1060 mm
H: 700 mm



ANATOLE SO POUF
L: 1060 mm
D: 1060 mm
H: 390 mm



ANATOLE SO ROTATING S SOFA
L: 1060 mm
D: 1060 mm
H: 700 mm



ANATOLE STOOL

Design | Jean-Michel Wilmotte

The chairs in the Anatole series are used for high top tables and height adjustable meeting spaces. Its dynamic structure allows mobility within the office.





It has a fabric or leather-upholstered polyurethane seat and back. Black plastic feet and casters are used. For aesthetic appearance and safety reasons, the gas column is hidden inside the pipe profile. Types include simple lever mechanism, gas column, star foot and wheel. Height adjustment is available on the products.









ANATOLE S1 HIGH CHAIR

L: 697 mm

D: 697 mm

H: 909 mm



ANATOLE S1 HIGH STOOL

L: 697 mm

D: 697 mm

H: 671 mm



ANATOLE S1 LOW CHAIR

L: 697 mm

D: 697 mm

H: 616 mm



ANATOLE S1 LOW STOOL

L: 697 mm

D: 697 mm

H: 386 mm



MICKEY

Design | Faruk Malhan

Meet the fun world of Mickey pouf, a necessity for every home with its angled legs made of solid knots and colorful upholstery options.



SIZE
L: 500 mm
D: 500 mm
H: 480 mm



Adding joy to living spaces, Mickey is suitable for waiting areas, hospitals, dormitories and hotel rooms.



MONA

Design | Yeřim Bakırküre

Mona is a design that allows many different compositions for common and waiting areas. Bu tasarımın ıkış noktası, paraları hareket ettirerek ihtiyaca göre farklı alternatifler oluřturmaktır.



SIZE
L: 950 mm
D: 513 mm
H: 461 mm



Thanks to its geometric structure, different combinations can be obtained either from a complete circle or from parts of each circle divided into thirds at different angles. This design can easily find its place in offices, hotels, airports, educational spaces and museums.



MOUSE

Design | Faruk Malhan

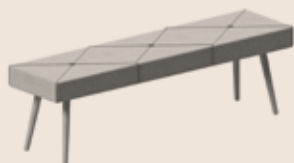
With its colorful upholstery options and angled solid legs, Mouse pouf elegant solution for your everyday bench options.





The Mouse pouf family, which has a circle and rectangular form, is suitable for use in living rooms, waiting areas, hospitals, dormitories and hotels.





MOUSE SO 160 POUF
L: 1600 mm
D: 400 mm
H: 480 mm



MOUSE SO R108 POUF
L: 1236 mm
D: 586 mm
H: 475 mm



MOUSE SO Ø110 POUF
L: 1100 mm
D: 1100 mm
H: 475 mm



REDLAC

Design | Studio Kairos

Redlac is a modular seating system developed for workspaces and free spaces. Different types of seating areas can be obtained by combining pouf units together to form small islands within an open space creating all kinds of different shapes



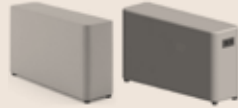


The modules that make up the pouf units are connected to each other with special fittings and can thus be shaped according to various needs. Ready-to-use mounting holes have been drilled under the relevant units of all pouf modules, taking into account different combination options.





REDLAC SO LPOUF / RPOUF
L: 2100 mm
D: 691 mm
H: 457 mm



REDLAC SO MDPOUF / MDPOUF_SOCKET
L: 1225 mm
D: 350 mm
H: 697 mm



SOLIS

Design | Studio Kairos

Solis is designed as a seating module to create different seating solutions in workspaces, common areas and living spaces.





Solis series consists of 3 different pouf units. Pouf units can be diversified by combining them with different usage compositions. Each of the pouf units can be selected from different colored fabrics to provide color richness.





SOLIS S0 LONGPOUF_WBACK
L: 915 mm
D: 1000 mm
H: 1092 mm



SOLIS S0 MDPOUF_WBACK
L: 1000 mm
D: 668 mm
H: 1092 mm



SOLIS S0 OUTERPOUF_WBACK
L: 1000 mm
D: 734 mm
H: 1092 mm



SOLIS POUF_WBACK
L: 1050 mm
D: 820 mm
H: 1150 mm



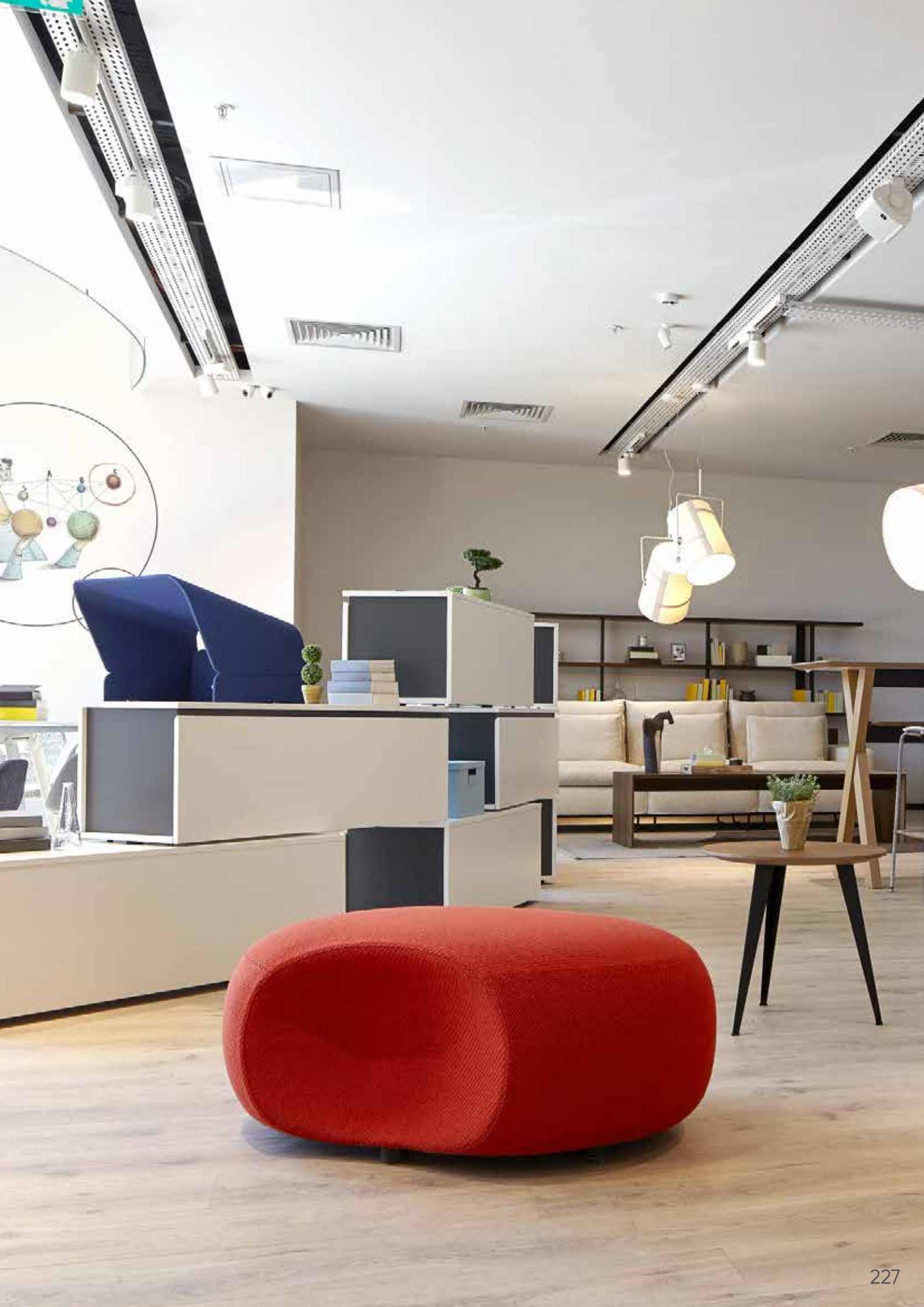
SOLIS S0 POUF
L: 1000 mm
D: 800 mm
H: 410 mm



SOLIS S0 MDPOUF
L: 1000 mm
D: 668 mm
H: 410 mm



SOLIS S0 OUTERPOUF
L: 1000 mm
D: 734 mm
H: 410 mm



STAIR CHAIR

Design | Studio Kairos

Stair chair is a unique chair design that is especially designed for learning spaces and is also a table. The idea is to have a simple solution that provides a very practical service for learning spaces such as the classroom, active learning spaces, seminar spaces, conferences, etc.



SIZE
L: 422 mm
D: 700 mm
H: 680 mm



Seat and back are covered on plywood. Legs are anthracite epoxy painted metal. The product uses shoes that provide adhesion to the floor and protect the floor. It is designed for use in educational areas. It can be easily deployed in schools, workplaces and even in public areas. The direction of the chair can be easily changed to lean back.



SURI

Design | Sezgin Aksu & Silvia Suardi

Suri is a playful pouf inspired by the traditional “Ottoman fez” and a complementary product for living spaces. In addition to being used as a pouf, it can also be used as a coffee table. It can be easily carried with its black leather handle.



SIZE
L: 500 mm
D: 500 mm
H: 450 mm



AMERICA

UNITED STATES

Resimercial Furniture LLC
215 Lexington Avenue, Suite 902
New York, NY 10016
+1 312 513 0220
info@koleksiyon.us

CANADA

Fittz Commercial Interiors Inc.
1377 The Queensway, Unit 100
Toronto, ON M8Z 1T1
+1 416 503 3637
info@fittz.ca

EUROPE

TURKEY

Koleksiyon
Cumhuriyet Mahallesi Hacı Osman Bayırı Cad.
No: 25 Sarıyer 34457 Istanbul, Turkey
+90 212 363 63 63
info@koleksiyon.com.tr

UNITED KINGDOM

Savile Row Projects Limited
Lower Ground 108-114 Golden Lane
EC1Y 0TG London, United Kingdom
+44 20 3701 80 08
e.roberts@savilerowprojects.com

AUSTRIA

Buerofreunde GmbH
Börsegasse 9, A-1010
Vienna, Austria
+43 1 532 0287
office@buerofreunde.at

CYPRUS

Ciddi Home Center Ltd.
Ali Rıza Efendi Cad. No:18 Ortaköy
Nicosia, Cyprus
+90 392 228 03 60
info@ciddihome.com

FRANCE

RBC Paris
40 rue Violet, 75015 Paris
01 45 75 10 00

RBC Lyon
Cube Orange
42 Quai Rambaud, 69002 Lyon
04 72 04 25 25

RBC Montpellier
609 Avenue Raymond Dugrand
Quartier port Marianne
34000 Montpellier
04 67 024 024

RBC Avignon
38 Boulevard Saint-Roch
84000 Avignon
04 90 82 52 56

RBC Nîmes
1 Place de la Salamandre
30000 Nîmes
04 66 67 62 22

RBC Isle sur la Sorgues
9 avenue de la Libération
84800 Isle-sur-la-Sorgue
04 65 00 00 77

RBC Gallargues
Zone du Pôle Actif
1 Avenue de la Fontanisse
30660 Gallargues-le-Montueux
04 66 73 30 00

GERMANY

Malhan Design GmbH
Breite Str. 3 40213
Düsseldorf NRW
Germany
+49 179 490 40 89
baran.zeren@koleksiyon.de

NETHERLANDS

DingsDesign
Axelsestraat 49
4543CD Zaamslag, The Netherlands
+31 63195 1872
info@loading-ddesign.com

POLAND

R19 Sp. Z.o.o Sp.k
ul. Rydygiera 19/U8 01-793
Warsaw, Poland
+48 662 505 075
office@r19.com.pl

ROMANIA

COS
73-81 Bucuresti-Ploiesti Road, Victoria
Business Park, Building 2, 1st Floor,
Bucharest, 013685
+4 021 317 1240
www.cos.ro

SPAIN

Artis
Entença 242, 08029
Barcelona, Spain
+34 973 25 78 00
artis@artis.es

GRAFIK Design

Beril Taşoğlu

RENDER

Berat Ölmez/Berke Göbülük/Nevzat Topbaş

FOTOĞRAF

Ayça Kobanbay/Cemal Emden/Gürkan Akay/Onur Kolkır/Saner Şen/

Thomas Mayer/Marlene Delcambre/Mark Cocksedge/Kelvin Cuff/Rafael Gamo

CIS

AZERBAIJAN

Workplace Interiors Ltd.
Marine Plaza, 62 Uzeyir Hajibeyli Street
Baku, Azerbaijan
+99 412 599 05 82
ilham.behbudov@workplace.az

TURKMENISTAN

INTER Group Yapı ve Proje Çözümleri San.
Tic. Ltd. Şti.
İdealtepe Mah. Dik Sk. No: 13/2
Maltepe, İstanbul
+90 216 475 75 76
inter@inter-sl.com

RUSSIA

Office Solutions
Business Centre 'White Stone'
9 floor, 4, 4 Lesnoy Lane, Moscow,
Russia, 125047
+7 495 258 55 99

AFRICA

NIGERIA

Urbankraft Studios
No.6 Oriwu Street, Lekki Peninsula Lagos State
Nigeria, West Africa
+234 803 894 2703
info@urbankraftstudios.com

MEA

EGYPT

T&D Design
The 47th Building 90th Street
North 5th Settlement, New Cairo, Egypt
+20 2266 87 01
Info@inddesign.com

JORDAN

Trilogy Furniture Company
Iritiria Str. Um Uthienah Vista
P.O. Box 630-11118 Amman, Jordan
+962 6 5563778
salah@trilogyfurniture.com

KUWAIT

T&D Design
Sharq Kebla, Block No. 3,
Suite 13 Kuwait City, Kuwait
+965 6515 0930
info@inddesign.com

SAUDI ARABIA

First Star Contracting
P.O. Box 13315 Riyadh 3642, Saudi Arabia
+966 11 411 1172 / 76
abdulmajeed.bindrib@fs-me.com

UNITED ARAB EMIRATES

Milo Interiors LLC
Sheikh Zayed Road , Ruby 2 building, 2nd floor
Umm Al Sheif - Dubai - UAE
+971 4 228 7476
info@milo.ae

ASIA PASIFIC

AUSTRALIA

Jeb Interior Solutions Pty Ltd.
Level 3 80 Wentworth Ave Surry Hills
NSW 2010 Sydney, Australia
+61 477 174 632
australia@jebgroup.com

CHINA

Jeb International Ltd.
5A Cheung Wah Industrial Bldg 10-12
Shipyard Lane, Quarry Bay, Hong Kong, China
+852 2520 2839
hongkong@jebgroup.com

INDIA

Kworktech Innovative Interiors Pvt. Ltd.
3349, 12th Main, 5th Cross HAL 2nd Stage
Bengalore-560008
+91 9845000173
info@kaizenworktech.com

SINGAPORE

Vanguard Interiors
3 Kallang Junction Vanguard Campus
Singapore 339265
+65 6538 4688
vanguard@vanguard.com.sg



MARCH 2023

The products are design registered and all rights belong to Koleksiyon®.
No document in this brochure may be reproduced without the written permission of the company.

For more information
www.koleksiyon.com.tr

